



# Proficy™ View Development and Runtime

**Design Full-Featured Machine-Level Graphics.** Proficy View (View) is an intuitive, machine-level HMI for machine control and small process control applications. It supports GE Fanuc's full line of operator interface products, including QuickPanel™ and QuickPanel View (Windows® CE) as well as Windows NT/2000/XP based systems, providing complete scalability from the smallest operator interfaces to full size HMI applications — all from a single graphics editor. View includes a complete set of functions for data collection, visualization, animation, alarming, and trending and supports a full line of shop-floor devices, including PLCs, CNCs, motion controllers, marquees, and serial devices.

## Product Features

**Openness and Interoperability.** View supports a wide range of open standards including OPC (Client and Server) for data connectivity and the exchange of alarm and event information, HTML for publishing applications as web pages, XML for data exchange, SQL for database access, and VBScript for scripting. It includes drivers for all leading PLCs, including GE Fanuc, Allen-Bradley, Modicon, and Siemens — and because it is OPC compliant, it supports connectivity to hundreds of other devices as well.

**Networking.** View's robust networking capabilities expand the power of your system. When projects call for multiple operator interfaces or HMIs, View lets you create projects with multiple stations and network them automatically. You can reference and use variables from any other View runtime on the network simply by dragging the variable from one station to the other.

**Web Publishing.** View includes a fully configured Web Server, which provides remote graphic viewing and control of your complete project from a standard web browser. With the remote editing feature enabled and the proper password entered, you can remotely monitor and manipulate process variables without having to be local at the machine.

**Toolchest.** Build applications rapidly with over 2000 pre-configured graphical objects from the Toolchest, a storage system for managing both built-in and user defined objects. These objects can include simple or complex animation, complete panels, scripts, and alarm objects. When developing an application, simply click on the object you want and drag it to your graphical panel for editing. When you need to update the object, just update the version in the Toolchest, and all projects that use that object will automatically be updated the next time they are downloaded or validated.



**P.J. BONER & CO. LTD.**  
INSTRUMENT & WEIGHING SPECIALISTS

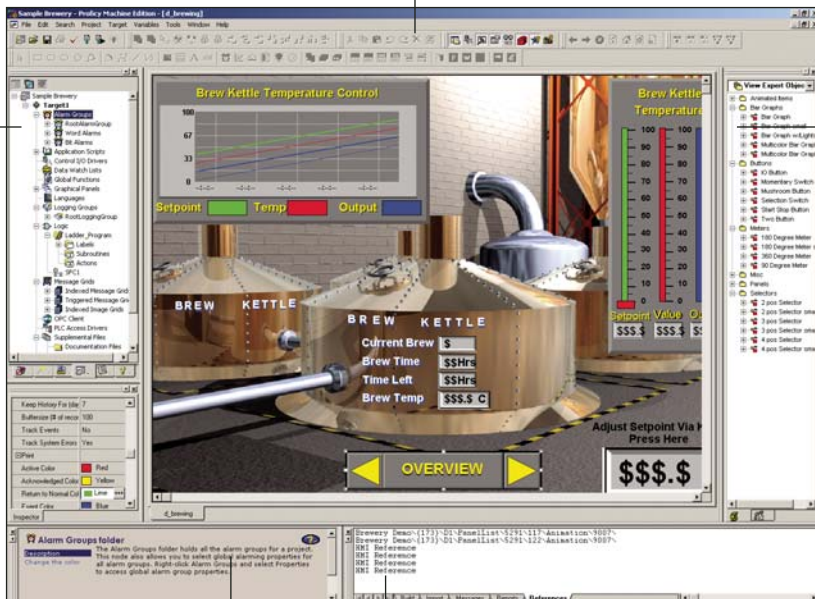
**Multi-Language Support.** View provides selectable runtime language display in a number of language modes, including English, German, French, Spanish, and Kanji. Using the built-in language tools, View automatically generates a table with all text strings used in the application and provides an easy way to edit and maintain the translated text strings. All language text is downloaded with the project, so it is easy to toggle between all of the supported languages at runtime. A single project can be created and used internationally, or you can have different users at a site view and monitor the application in the language of their choice. This reduces the need to maintain multiple projects for different languages or include additional panels within a project for each of the languages.

**Scripting.** View includes an extensive set of scripting commands for string manipulation, COM port functions, SQL commands, extended math operations, and SPC support. For enhanced scripting functions, you can also use VBScript instead of or along with View custom scripts. VBScript offers additional capabilities such as enhanced string support with overloaded operators, user defined functions, extendable via COM objects, and local scoped variables.

**Proficiency Machine Edition.** View is the graphical interface component of Proficiency Machine Edition, a state-of-the-art suite of tools geared to machine and process industries. It incorporates a unique, "single user" interface, hosting several development and runtime engines within a common environment. Graphical interface, PC-based control, motion, and PLC programming are just a few of the components included. OEMs, production facilities, and process plants can all reap the benefits of Machine Edition.

Build and edit HMI animations from scratch or use pre-defined objects from the Toolchest.

All the elements of your project are mapped in the Navigator. Click an element to open it; right click for a menu of things you can do with it.



Just drag the elements you need for your application from the Toolchest onto the HMI panel. It holds common HMI animations along with any associated logic sequences, and stores your work for later retrieval and reuse.

The interactive Companion gives you advice and explanations as you work.

The Feedback Zone provides status of the last validation, build, or import and provides a detailed cross-reference showing all of the places in the project where the current address or variable is being used.

**GE Fanuc Automation Information Centers**

USA and the Americas:  
1- 800-GE FANUC  
or (434) 978-5100

Europe, Middle East and Africa:  
(352) 727979-1

Asia Pacific:  
86-21-3222-4555

**Additional Resources**

For more information, please visit the GE Fanuc web site at:

[www.gefanuc.com](http://www.gefanuc.com)

